

GB-05 塑料角支轴承

GB-05 Plastic Spherical Bearings

产品特性 Product Features

■ 外壳采用高强度工程塑料M163制成，内部安装标准自润滑球体

- 免维护、自润滑
- 适合重载低速运动
- 自动补偿安装偏差
- 耐冲击、无噪音
- 耐灰尘、重量轻
- 适用于旋转、摆动和直线运动

■ The housing is made of high strength plastic M163. The standard BAL self-lubricated balls are installed inside the housing

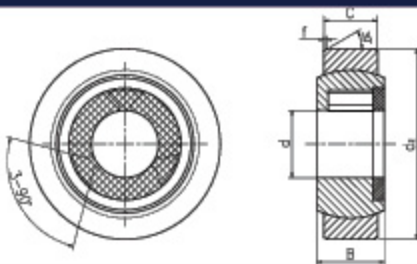
- Maintenance free and self-lubricated
- Suitable for high load and low speed operations
- Self-compensation for the installation deviation
- Impact resistance and silent operation
- Dust resistance with light weight
- Suitable for rotation, oscillation and linear operations



订购编码 Order PN

订购编码 Order PN:
GB-05-04

内径 Inner diameter



订购编码 Order PN	订购编码 Order PN	最大静载荷 [N] Max. static load		d ₁ E10 [mm]	d ₂ [mm]	B [mm]	C [mm]	f [mm]	最大调整角度 Max. adjust angle	重量 Weight[g]	
		径向 Radial	轴向 Axle							Plastic	AL
GB-05-04	GB-05-04AL	600	50	4	12	5	3	0.3	37°	0.4	0.7
GB-05-05	GB-05-05AL	1000	130	5	14	6	4	0.3	33°	0.8	1.3
GB-05-06	GB-05-06AL	1200	150	6	14	6	4	0.3	27°	0.9	1.5
GB-05-08	GB-05-08AL	1800	175	8	16	8	5	0.3	24°	1.2	2
GB-05-10	GB-05-10AL	2500	400	10	19	9	6	0.5	24°	1.9	3.2
GB-05-12	GB-05-12AL	3800	650	12	22	10	7	0.5	21°	2.8	4.8
GB-05-15	GB-05-15AL	5500	1000	15	26	12	9	0.5	21°	6.9	11.8
GB-05-16	GB-05-16AL	6000	1150	16	28	13	9.5	0.5	21°	9.0	15.3
GB-05-20	GB-05-20AL	9000	1400	20	35	16	12	0.8	18°	16.3	27.8
GB-05-25	GB-05-25AL	14000	2900	25	42	20	16	0.8	16°	29	49.3
GB-05-30	GB-05-30AL	17000	4000	30	47	22	18	0.8	13°	37.4	63.6

*AL: 铝制外壳根据要求 Aluminum housing upon request