

GB-02 基座关节轴承，紧凑型 GB-02 Pillow Block Spherical Bearing, Compact Design

产品特性 Product Features

- 球体采用高耐磨材料HPP28制成
 - 保持器采用硬质氧化铝铝合金制成
 - 干运行、免维护
 - 补偿中心误差
 - 高径向载荷并能承受边缘载荷
 - 重量轻、节约空间、易安装
- Spherical ball made of highly wear-resistant HPP28
 - Housing made of aluminum alloy with hard anodized surface
 - Maintenance-free, self lubricating
 - Compensation of misalignment errors
 - High radial loads and compensation of edge loads
 - Very low weight and space saving Easy installation

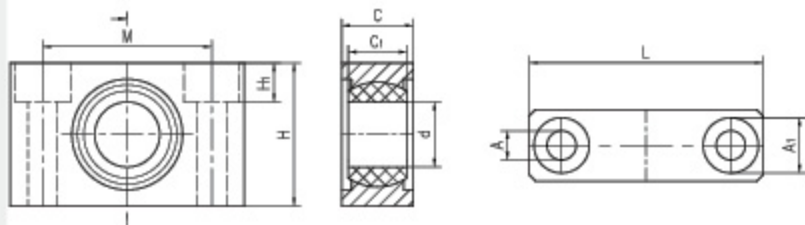


订购编码 Order PN

订购编码 Order PN:

GB-02-08

内径 Inner diameter



订购编码 Order PN	d ₁ E10 [mm]	H [mm]	H ₁ [mm]	A [mm]	M [mm]	A ₁ [mm]	L [mm]	C [mm]	C1 [mm]	最大静态抗拉强度 Max. axial static compressive strength		最大径向抗压强度 Max. radial com pressive strength		最大轴向抗 压 Max. axial strength		最大 扭力 Max. torque [Nm]	重量 Weight [g]
										短期 Sort- term [N]	长期 Long- term [N]	短期 Sort- term [N]	长期 Long- term [N]	短期 Sort- term [N]	长期 Long- term [N]		
GB-02-08	8	19	/	4.5	22	/	31	9	8	2500	1250	4300	2150	600	300	1.3	9
GB-02-10	10	22	/	5.5	26	/	36	10	9	3400	1700	5300	2650	700	350	2.5	17
GB-02-12	12	26	/	5.5	28	/	38	10	12	4600	2250	6500	3250	750	375	2.5	9
GB-02-16	16	34	6.4	6.6	37	10.6	50	13	13	6700	3350	8500	4250	1100	550	4.5	30
GB-02-20	20	40	8.6	9	46	14	62	16	16	8500	4250	11000	5750	1400	700	4.5	52
GB-02-25	25	48	8.6	9	54	14	72	20	20	13500	6750	18500	9250	2300	1150	10.5	85
GB-02-30	30	56	10.6	11	64	17	86	22	22	10000	5000	16500	8250	2500	1250	10.5	140